

PLT File Export in CorelDraw

I normally save my designs in a Finished Folder and the PLT file in a PLT folder
The cutting path I normally set the width to 1pt

Fig 1

First save your design as a CorelDraw file, Fig 1,
design ready to save as a CorelDraw file

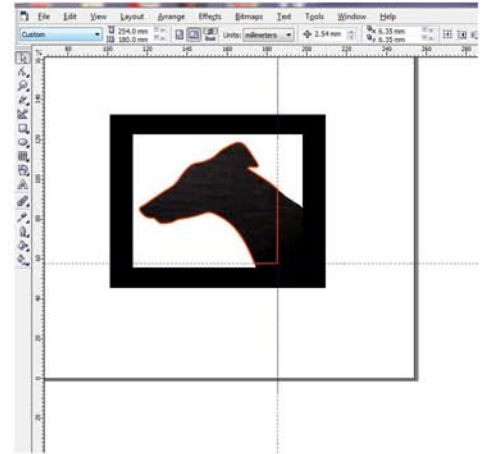


Fig 2

Fig2
Select the cutting path, and move
to the bottom left of the artboard in
CorelDraw, with it still selected, choose
Export from the File Menu

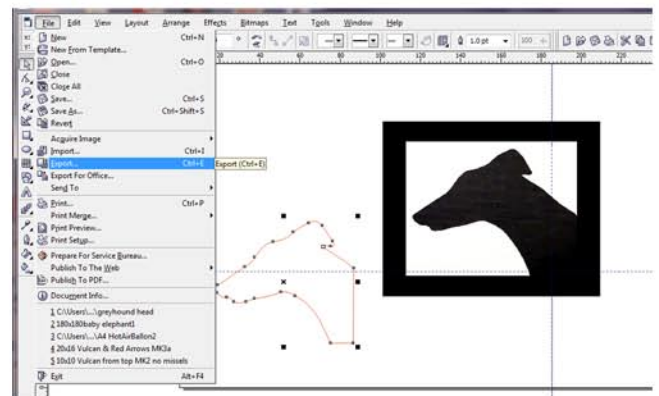


Fig 3

Fig 3
In the dialog box, select PLT -HPGL Plotter File
in the Save As File Type, also make sure to select
the tick box for Selected Only
The press OK, a new dialog box will open

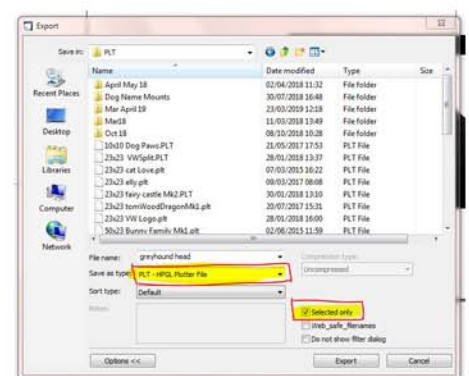


Fig 4

In the HPGL dialog box, select the
Advance Tab, Make sure to select
the tick box for Remove Hidden Lines
and set the Curve Resolution as in fig 4
which is 0.001 in the left box, and Inches
in the right drop down list. Then press OK

Fig 4

