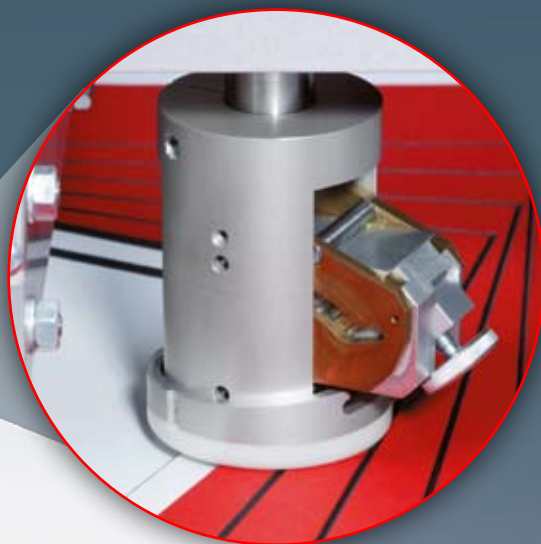


 **GUNNAR**  
F1/F1 hybrid



 **GUNNAR**  
F1 hybrid

# THE NEXT EVOLUTION IN CMC TECHNOLOGY

The GUNNAR F1 offers first-class performance at an unbeatable price.

User-friendly adjustment and operation.

Cut multiple mats and v-grooves – at the click of the mouse.



## » ADVANCED PERFORMANCE

The GUNNAR® F1/F1 hybrid™ is the result of GUNNAR's exceptional track record and long industry experience as pioneers of CMC technology. It is the proven winner when it comes to reliability and efficiency in matcutting – designed by framers for framers. Its intuitive design and operation is easy to understand for anyone with a picture framing background. Thanks to its compact construction and adjustable table angle, the GUNNAR F1 can suit even the most limited space requirements. Your choice of space saving angled or wall mounted operation, or horizontal operation with no gravity related problems. Offering uncompromised accuracy, precision and speed, the GUNNAR F1/F1 hybrid comes at an affordable price within reach of most custom framing businesses. Why compromise, when you can now afford to own «the best»...

«No cartridges, no dials, no changing heads... No confusion, no problems!» – The GUNNAR F1/F1 hybrid is the industry's first single head CMC, featuring a seamless, uninterrupted cutting process for mixed cut jobs (45° & 90°), offering limitless creativity with even less waste!

## » SWISS QUALITY

GUNNAR has raised the bar for quality, performance, and affordability. With a GUNNAR F1/F1 hybrid you will be able to produce mats in one individual operation, no matter how complex your template will be. Thanks to GUNNAR's new patent pending hybrid cutting head, beveled and straight cuts require no cart-ridge or head change whatsoever. In addition to this, the new hybrid cutting system also offers automatic, variable blade depth – allowing you to cut single, double and even triple mats or decorative v-grooves with absolutely no adjustment required whatsoever, regardless of cutting from the front or the back! Even the thickest 8ply museum board or most 12ply boards can be cut at the click of the mouse. If necessary, even production jobs become simple and profitable, as GMC software can automatically generate and arrange multiple production layout mats, at the click of a button. The software will also allow you to cut small mats inside the fallouts of larger mats in the same process. This dramatically reduces wastage and saves time. Operating the GUNNAR F1/F1 hybrid is easy and easy to learn. Multiple openings, straight outside cuts, decorative fonts or logos, elegant debossing, cuts from the back or the front of the matboard – the options are limitless with the GUNNAR F1/F1 hybrid .

Hybrid cutting head: patent pending

«GUNNAR», «GUNNAR Mat Creator», «GMC», «F1 hybrid» and «Hybrid cutting head» are registered Trademarks of Weissenberger AG, Switzerland

The GUNNAR hybrid cutting head can automatically handle all cutting requirements.

Reduced to the optimum: the F1's intelligent design ensures simple and rapid operation.



## ➤ UNIQUE FEATURES

- **Affordable** – The GUNNAR F1 is the most advanced and the most affordable computerised matcutter, designed specifically for the custom picture framer.
- **Flexible** – The GUNNAR hybrid head can automatically cut any matboard thickness required, from either front or back, beveled, straight or v-groove in a single, uninterrupted process.
- **Tool-free blade change** – Easily change the blade in a matter of seconds.
- **Fast** – With a cutting speed of 500mm/second, you can cut a 40 x 50cm / 16" x 20" opening in less than 8 seconds, making it the fastest CMC in its price range.
- **Sensitive clamping system** – The GUNNAR F1's pneumatic clamping system secures the mat firmly in place, and leaves no marks or indentations in the matboard.
- **Choice** – The GUNNAR F1 is available in 2 different sizes (M / XL) and 2 different models: Standard with single 45° cutting head; or as F1 hybrid with the new hybrid «dual» cutting head.
- **Swiss precision** – GUNNAR 's reputation for precision and accuracy is second to none. The GUNNAR F1's Swiss design and engineering leads the market in superior reliability and accuracy.

## ➤ EASY TO OPERATE

- **New Software** – GMC «GUNNAR Mat Creator»; elegant Windows Vista interface, featuring new advanced functions, yet simple & easy to use.
- **Intuitive** – GMC has been developed by framers for framers, therefore it «thinks» like you do!
- **Save your designs** – Do the work once. Any mat created can be saved for retrieval at a later date, saving you time.
- **NEW Design Library** – Organize your frequently used templates and designs in your own design folder, with direct access.
- **Cut words & letters** – The GMC software gives you the ability to cut text in any true type font.
- **Multi-lingual** – GMC software can be installed in English, German, French, Spanish, Chinese, etc.
- **Multiple Layers** – Simple creation of multiple layer mats up to 7 layers.
- **Create your own shapes** – GMC software offers a choice of different systems to help you unlock your true creative potential, through built-in design tools, and also easy one-step importing from popular graphics software like Corel DRAW.
- **Comprehensive alignment tools** – These simple tools allow you to easily create aesthetically pleasing multiple openings without the need to use a calculator, saving time and reducing mistakes. Visit our website for more detailed information [www.gunnar-int.com](http://www.gunnar-int.com).

# TECHNICAL DETAILS

## ✚ MACHINE PARAMETERS

	GUNNAR F1-M	GUNNAR F1-XL
Max. board thickness	3.5 mm / 0.14"	3.5 mm / 0.14"
Max. board format	120 × 90 cm / 47.25 × 35.50"	154 × 103 / 60.6 × 40.5"
Dimensions (when horizontal)	1533 / 1284 / 1150 mm 60.4 / 50.6 / 43.9"	1873 / 1414 / 1150 mm 73.3 / 55.7 / 43.9"
Weight (machine / stand)	65 kg / 15 kg	75 kg / 15 kg
Max. cutting speed	500 mm / sec 20 inches / sec	500 mm / sec 20 inches / sec
Drive system	Micro stepping motors (0.02 mm per step)	Micro stepping motors (0.02 mm per step)
Mount holding system	Pneumatic tube clamping	Pneumatic tube clamping
Interface	RS232 or USB	RS232 or USB
Warranty	2 years or 50'000 openings	2 years or 50'000 openings

	F1-M	F1 hybrid-M	F1-XL	F1 hybrid-XL
45° cut	x	x	x	x
90° cut	–	x	–	x
Automatic switch between 45°-90° cut	–	x	–	x
Automatic v-grooves	x	x	x	x
Automatic step less blade depth adjustment	–	x	–	x
Manual blade depth adjustment (blade holder)	x	–	x	–
Unique Guarantees:				
• Perfect overcuts	x	x	x	x
• Perfect circles / ovals (no entry/exit mark)	x	x	x	x
• Perfect corners (no hooking regardless of mat type)	x	x	x	x
Incl. current Software GUNNAR Mat Creator GMC	x	x	x	x

All details subject to change without notice.

## ✚ SYSTEM REQUIREMENTS

PC (not included in scope of supply)	Please find the current PC requirements on our homepage <a href="http://www.gunnar-int.com">www.gunnar-int.com</a>
Power supply	230 V / 50 Hz, 6 A 115 V / 60 Hz, 10 A 100 V / 50–60 Hz, 10 A
Compressed air supply	Min. 6 bar Min. 90 psi

### Weissenberger AG

Staatsstrasse 119 CH-9445 Rebstein Schweiz  
Phone +41 (0)71 775 82 20 Fax +41 (0)71 775 82 29  
[info@gunnar-europe.com](mailto:info@gunnar-europe.com) [www.gunnar-int.com](http://www.gunnar-int.com)

